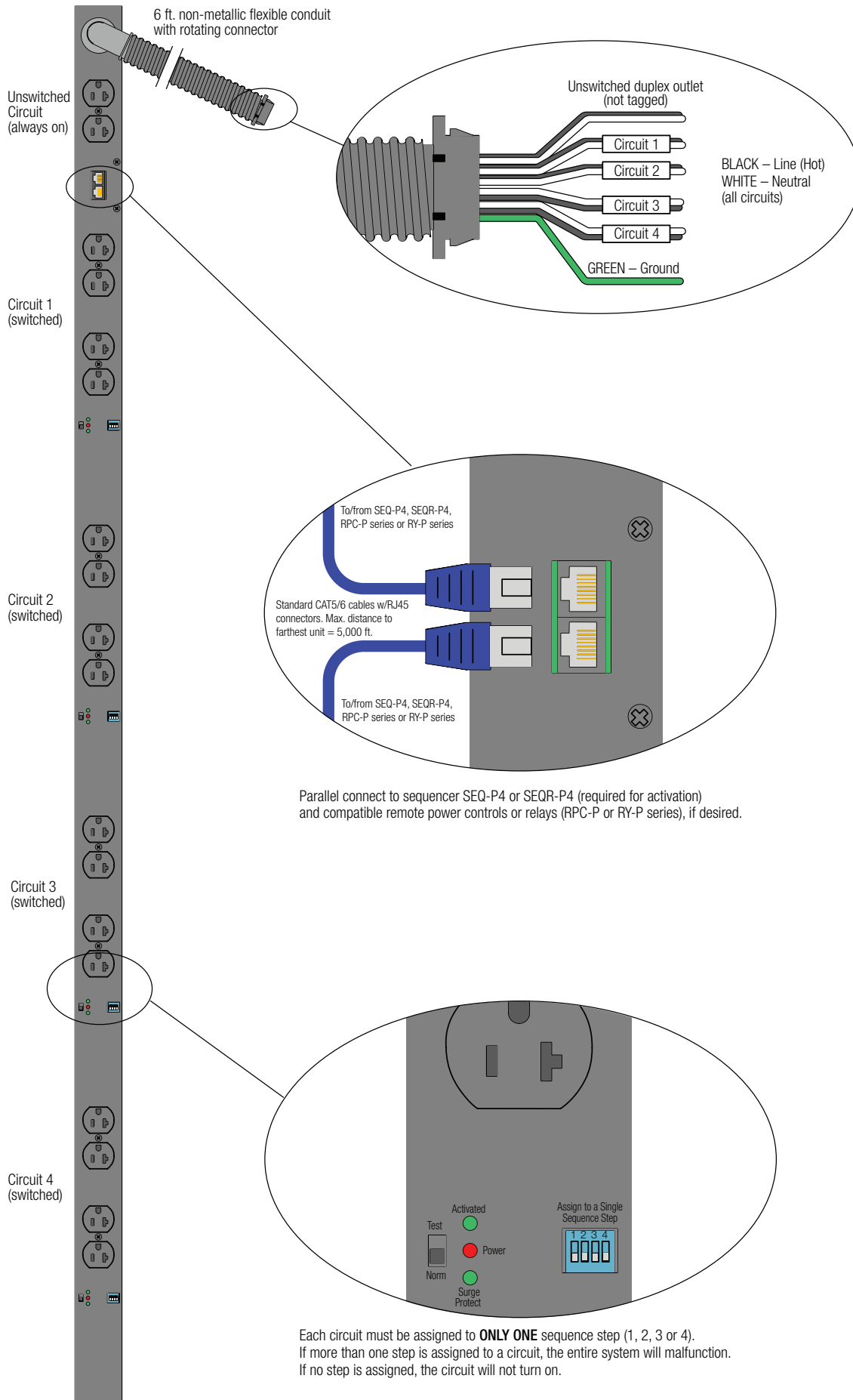


Hardwired power strip features five circuits and a total of nine 20A duplex outlets. One circuit with a duplex outlet is unswitched (always on). The other four circuits (with two duplex outlets each) are activated by a compatible power sequencer, which is required for activation. Order sequencer SEQ-P4 or SEQR-P4 separately.

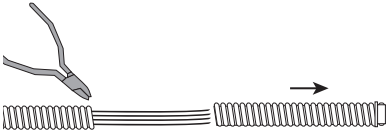
### FEATURES:

- **Outlets:** Total of nine (9) NEMA 5-20R duplex outlets
- **Power Rating:** 120VAC 60Hz 20A each circuit
- **Unswitched Circuits:** One duplex outlet on an unswitched circuit is always on.
- **Switched Circuits:** Four circuits are switched (controlled by the separate sequencer). Each of these circuits includes two duplex outlets.
  - Each switched circuit is internally connected to a dual parallel RJ45 jack, which connects to the sequencer via CAT5/6 cable (not included). The dual parallel jacks allow for daisy chaining to additional remote power controls (RPC-P Series) and/or relays (RY-P Series). Compatible devices are listed on the last page.
  - Each of the four circuits is assigned a sequence step by setting its switch to 1, 2, 3 or 4. Multiple circuits can be assigned to each sequence step (60 max).
  - Each of the four switched circuits must be assigned to only one sequence step (1, 2, 3 or 4). If more than one step is assigned to any circuit, the entire system will malfunction. If no step is selected, the circuit will not turn on.
- **Surge Protection:**
  - Maximum Surge Current: 10,000A
  - VPR: 400V
  - Response Time: 1 nanosecond
  - EMI/RFI Noise Reduction: 20dB@100kHz
  - Protection Mode: Line to Neutral
  - Ground Contamination: None
- **Chassis:** 60" x 2" x 2" steel chassis with black powder epoxy finish.
- **Non-metallic Flexible Conduit:** Terminates to six ft. flexible conduit with pigtail leads tagged for circuit identification. Conduit can be trimmed in the field as needed.
- **Mounting Brackets:** Universal mounting brackets provide versatility allowing the outlets to face forward, center or rear of rack. Minimal rack panel space required = 61.25" (35U).
- **Origin:** Made in the U.S.A. with global components.
- **Third Party Listing:** ETL Listed (to UL 60065)
- **A&E Specifications:** The hardwired power strip shall be Lowell model ACS-2018-5C-RPCP-HW with power rating of 120VAC 60Hz 20A. The 60" x 2" x 2" steel chassis with black powder epoxy finish shall include five circuits and nine NEMA 5-20R duplex outlets. One duplex outlet shall be on an unswitched circuit (always on). The other duplex outlets shall be on four switched circuits which shall be activated and deactivated by Lowell power sequencer model SEQ-P4 or SEQR-P4, ordered separately. The power strip shall include surge protection up to 10,000A. It shall also include universal mounting brackets and a six ft. non-metallic flexible conduit with pigtail leads. The unit shall be made in the USA with global components and shall be ETL Listed.

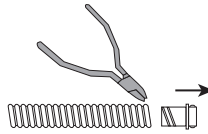




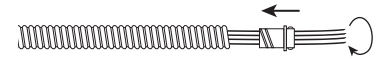
**HOW TO TRIM THE CONDUIT:** The 6 ft. non-metallic flexible conduit can be trimmed in the field.



1) REMOVE EXCESS LENGTH:  
Snip reinforcing rib at desired length. Bend the conduit to expose the cut and carefully cut around the conduit without cutting the wires inside. Remove excess length.



2) REMOVE CONNECTOR:  
Carefully snip the last rib(s) to loosen the connector from the excess length, then twist/pull to remove it.

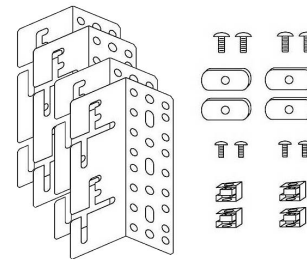


3) REATTACH CONNECTOR:  
Twist/push the connector to attach it to the shortened conduit.

### UNIVERSAL BRACKETS:

Brackets include multiple hardware sets for versatile installation:

- (4) Brackets
- (4) 1/4"-20 x 1/2" screws
- (4) Flat nuts
- (4) 10-32 x 1/2" screws
- (4) Cage nuts



### COMPATIBLE PASS-THROUGH DEVICES:

Order separately.

All pass-through devices require sequencer SEQ-P4 or SEQR-P4 for activation. Optional add-on compatible devices are also listed in the chart below. See individual product spec sheets for more information.

Model No.	Description	Power Rating	Power Input Connection	Output Connection	Output Voltage Rating	Surge Supp.	Activation Trigger
SEQ-P4	Sequencer		Power supply				External switch or DSP conn*
SEQR-P4	Sequencer, rackmount		Power supply				Built-in sw, external sw or DSP*
RPC-P15	Remote Power Control	125VAC 15A	5-15P cord	5-15R duplex			SEQ-P4 or SEQR-P4**
RPC-P15-U	Remote Power Control	100-240VAC 15A	C14 cord	C13 duplex			SEQ-P4 or SEQR-P4**
RPC-P15-S	Remote Power Control	125VAC 15A	5-15P cord	5-15R duplex		✓	SEQ-P4 or SEQR-P4**
RPC-P20-SCD	Remote Power Control	125VAC 20A	5-20P cord	5-20R duplex		✓	SEQ-P4 or SEQR-P4**
RPC-P20-SHW	Remote Power Control	125VAC 20A	Flexible whip	5-20R duplex		✓	SEQ-P4 or SEQR-P4**
RPC-P30-SHW	Remote Power Control	125VAC 30A	Flexible whip	L5-30R twistlock		✓	SEQ-P4 or SEQR-P4**
RY-P1	Relay (1 DPDT)		Power supply		DPDT Relay 5A		SEQ-P4 or SEQR-P4**
RY-P2	Relay (2 DPDT)		Power supply		DPDT Relay 5A		SEQ-P4 or SEQR-P4**
<b>ACS-2018-5C-RPCP-HW</b>	<b>Power Strip w/remote</b>	<b>120VAC 20A</b>	<b>Flexible whip</b>	<b>5-20R duplex (9)</b>		✓	<b>SEQ-P4 or SEQR-P4**</b>

\* Order activation trigger separately, as needed.

\*\* Note that only the first remote device in a string requires connection to the sequencer for activation. A second device would connect to the first using the pass-through RJ45 jacks. Additional devices can be connected to each other in a similar way (up to 20 devices per step).

This spec

