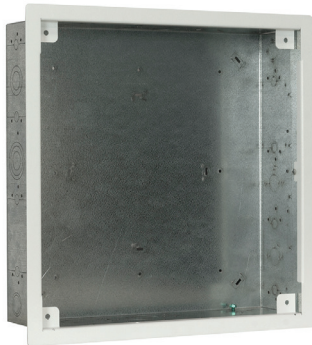


convenient solution for AV, data, or telecom equipment
14.25"H x 14.25"W x 3.6"D (without trim plate)



The galvanized steel box includes a white trim plate (field installed).



Side breakaway segments allow this box to adapt to walls shallower than 4"D.



Optional cover panel



Optional power bracket

features

- **Height:** 14.25" [362] box
15.00" [381] box w/trim plate
- **Width:** 14.25" [362]
15.00" [381] box w/trim plate
- **Depth:** 3.6" [92] usable
3.7" [94] depth w/trim plate
- **Description:** The in-wall box mounts between standard 16" studs, providing a handy storage area behind wall-mounted displays, while serving as a convenient and adaptable distribution point for various devices and cabling.
- **Construction:** Galvanized steel box and white steel trim plate.
- **Side Breakaway Segments:** Each side has a breakaway segment that can be removed so the box can fit walls that are shallower than 4"D (box is reduced to 3"D).
- **Knockouts & Cable Management:** Knockouts in top and base for cable bundles (1/2", 1", 1-3/4") and one-gang electrical box. Rear anchors for cable tie-off.
- **Installation:** The in-wall box mounts between standard 16" wall studs to fit in a 4"D wall, or shallower walls if the side breakaway segments are removed.
- **Grounding Stud:** Included in base
- **Load Capacity:** 15 lbs.
- **A&E Specifications:** The in-wall box shall be Lowell model IWBK-1414, which shall feature a galvanized steel box with white trim plate. Overall dimensions, including trim plate, shall be 15"H x 15"W x 3.7"D. The box shall mount between 16" stud centers. It shall feature top and bottom knockouts for cables and 1-gang electrical boxes, and a grounding stud. The box shall have side breakaway segments to adjust to walls shallower than 4"D.
- **Optional:** (order separately)
 - IWBK-1414-CVR: Steel cover panel with cable exits, vents, and white finish.
 - IWB-PB Series: Bracket with two or three duplex outlets fits in base.

IWBK-1414 model summary

Model No.	Box Height	Overall Height w/Trim Plate	Box Width	Overall Width w/Trim Plate	Usable Depth	Overall Depth w/Trim Plate	Load Capacity
IWBK-1414	14.25 [362]	15.00 [381]	14.25 [362]	15.00 [381]	3.6 [92]	3.7 [94]	15 lbs

Rack dimensions = inches [mm]; 1U = 1.75"

technical drawings

