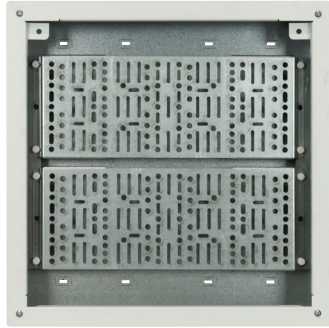
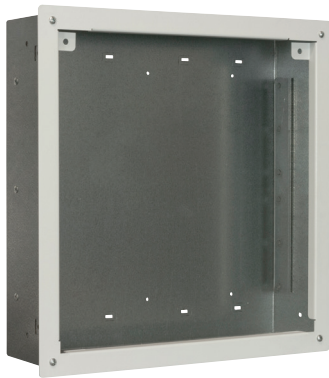


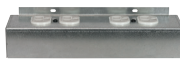
convenient solution for AV, data, or telecom equipment  
14.25"H x 14.25"W x 3.6"D (without trim plate)



Galvanized steel box includes white trim plate and two repositionable elevated panels.



Optional cover panel



Optional power bracket

### features.

- **Height:** 14.25" [362] box  
15.00" [381] box w/trim plate
- **Width:** 14.25" [362]  
15.00" [381] box w/trim plate
- **Depth:** 3.6" [92] usable  
3.8" [95] depth w/trim plate
- **Description:** The in-wall box mounts between standard 16" studs, providing a handy storage area behind wall-mounted displays, while serving as a convenient and adaptable distribution point for various devices and cabling.
- **Construction:** Galvanized steel box and a steel trim plate with white finish
- **Repositionable Panels:** Two elevated panels can be moved, removed, or reversed to mount upside down—whatever's needed for the application.
- **Knockouts & Cable Management:** Laser knockouts in top and base for cable bundles and one-gang electrical box (not included). Rear anchors for cable tie-off.
- **Installation:** The in-wall box mounts between standard 16" wall studs to fit in a 4"D wall. Depth positioning tabs aid placement.
- **Grounding Stud:** Included in base
- **Compliance:** RoHS compliant. UL 2416 Listed.
- **Load Capacity:** 15 lbs.
- **A&E Specifications:** The in-wall box shall be Lowell model IWB-1414, which shall feature a galvanized steel box with white trim plate. Overall dimensions, including trim plate, shall be 15"H x 15"W x 3.8"D. The box shall mount between 16" stud centers. It shall feature two removable mounting panels for devices, top and bottom knockouts for cables and 1-gang electrical boxes, and a grounding stud.
- **Optional:** (order separately)
  - IWB-1414-CVR: Steel cover panel with cable exit, vents, and white finish.
  - IWB-PB Series: A power bracket with two or three duplex outlets can fit in base, however, one elevated panel would have to be removed.

### IWB series summary

Model No.	Box Height	Overall Height w/Trim Plate	Box Width	Overall Width w/Trim Plate	Usable Depth	Overall Depth w/Trim Plate	Removable Mounting Panels	Load Capacity
IWB-914	9.25 [235]	10.00 [254]	14.25 [362]	15.00 [381]	3.6 [92]	3.8 [95]	1	15 lbs
<b>IWB-1414</b>	<b>14.25 [362]</b>	<b>15.00 [381]</b>	<b>14.25 [362]</b>	<b>15.00 [381]</b>	<b>3.6 [92]</b>	<b>3.8 [95]</b>	<b>2</b>	<b>15 lbs</b>
IWB-2214	22.25 [565]	23.00 [584]	14.25 [362]	15.00 [381]	3.6 [92]	3.8 [95]	3	15 lbs

Dimensions = inches [mm]



# technical drawings

