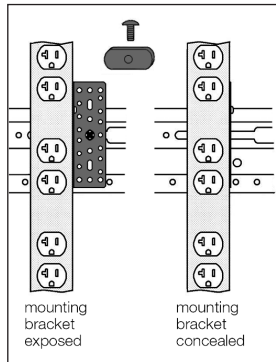
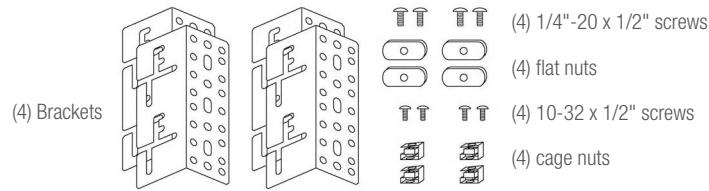


Ten-circuit power strip with twenty NEMA 20A insulated ground receptacles (10 duplex), for installations requiring multiple AC power circuits, includes universal mounting brackets with hardware.

FEATURES:

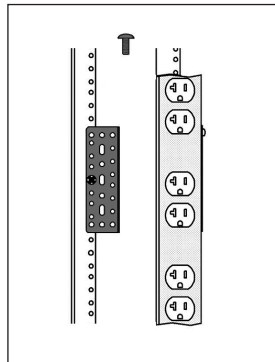
- **Power Rating:** 120VAC, 60Hz, 20A (each circuit)
- **Chassis:** 60" x 2" x 2" steel chassis with black powder epoxy finish
- **Termination:** Hardwired 6 ft. non-metallic flexible conduit (whip) rotates in any direction. It can be trimmed in the field if needed.
- **Circuits & Receptacles:** A total of 20 insulated ground (isolated ground, I.G.) receptacles (10 duplex) are wired into 10 independent circuits.
 - Each circuit powers one (1) NEMA 5-20R I.G. duplex receptacle
 - Connections are made via numbered pigtail leads.
- **Universal Mounting Brackets:** The universal brackets allow for power strip installation in a variety of applications with receptacles facing front, center or rear. Brackets are engineered with multiple mounting points and include two types of hardware to facilitate easy installation in a rack with adjustable or fixed rails, to a wall, or under a desk/counter. The brackets can be mounted so they are exposed for easy access or concealed beneath the power strip for an aesthetically cleaner installation.
- **Certification:** ETL Listed in U.S./Canada
- **Origin:** Made in U.S.A. with global components
- **A&E Specifications:** The 20A power strip with 10 independent circuits shall be Lowell model ACS-2020-IG-10C-HW. It shall feature 20 isolated ground (I.G.) NEMA 5-20R receptacles (10 duplex). The power strip shall terminate via a six-foot non-metallic flexible conduit with a rotating connector and pigtail leads tagged for circuits 1-10. The power strip chassis shall measure 60" x 2" x 2" and shall be steel with black powder epoxy finish. It shall include universal mounting brackets. The power strip shall be made in the U.S.A. with global components.

UNIVERSAL MOUNTING BRACKETS: The brackets can be mounted exposed for easy access or concealed for a cleaner install. Includes variety of hardware for versatile installation.



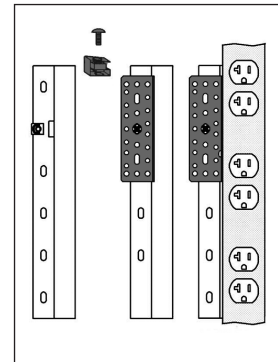
RACK w/ADJUSTABLE RAILS (side mount):

Mount to horizontal side supports with universal brackets, 1/4"-20 screws, flat nuts.



RACK w/ADJUSTABLE RAILS (rear mount):

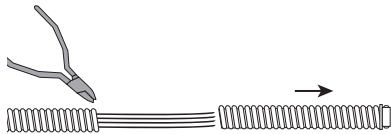
Mount to rear rail with universal brackets, 10-32 screws.



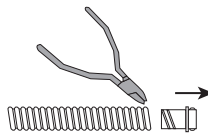
RACK w/ FIXED POSITION RAILS (and rear Z-angle bracket):

Mount to Z-angle with universal brackets, 10-32 screws, cage nuts.

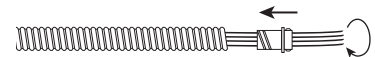
HOW TO TRIM THE CONDUIT: The 6 ft. non-metallic flexible conduit can be trimmed in the field.



- 1) REMOVE EXCESS LENGTH:
Snip reinforcing rib at desired length. Bend the conduit to expose the cut and carefully cut around the conduit without cutting the wires inside. Remove excess length.



- 2) REMOVE CONNECTOR:
Carefully snip the last rib(s) to loosen the connector from the excess length, then twist/pull to remove it.



- 3) REATTACH CONNECTOR:
Twist/push the connector to attach it to the shortened conduit.



ACS Series Power Strips (overview)

Model No.	Power Rating	NEMA Receptacles	Circuits	Chassis Length	Chassis Profile	Termination	On/Off Switch	Surge Suppression	Remote Power Control	Mounting Aids	Country of Origin
ACS-1505-SW	15A	5 (15A)	1	12"	Standard	6' Det. cord	Yes	---	---	Brackets	U.S.
ACS-1505-SW-SD	15A	5 (15A)	1	12"	Standard	6' Det. cord	Yes	2-stage	---	Brackets	U.S.
ACS-1506	15A	6 (15A)	1	20"	Low	6' Fixed cord	---	1-stage	---	Clips	China
ACS-1506-WW	15A	6 (15A)	1	12"	Low	6' Fixed cord	---	---	---	Screws	U.S.
ACS-1507	15A	7 (15A)	1	12"	Low	6' Det. cord	---	---	---	Screws	U.S.
ACS-1512	15A	12 (15A)	1	32"	Low	12' Fixed cord	---	1-stage	---	Clips	China
ACS-1524	15A	24 (15A)	1	60"	Low	12' Fixed cord	---	1-stage	---	Clips	China
ACS-1524-2C	15A	24 (15A)	2	70"	Low	Pigtail leads	---	---	---	Clips	China
ACS-2012	20A	8 (15A) + 4 (20A)	1	32"	Low	12' Fixed cord	---	1-stage	---	Clips	China
ACS-2024	20A	16 (15A) + 8 (20A)	1	70"	Low	12' Fixed cord	---	1-stage	---	Clips	China
ACS-2014-HW	20A	14 (20A)	1	30"	Standard	6' Conduit	---	---	---	Brackets	U.S.
ACS-2014-2C-HW	20A	8 (15A) + 6 (20A)	2	30"	Standard	6' Conduit	---	---	---	Brackets	U.S.
ACS-2020-6C-HW	20A	20 (20A)	6	60"	Standard	6' Conduit	---	---	---	Brackets	U.S.
ACS-2020-IG-6C-HW	20A	20 (I.G. 20A)	6	60"	Standard	6' Conduit	---	---	---	Brackets	U.S.
ACS-2020-IG-10C-HW	20A	20 (I.G. 20A)	10	60"	Standard	6' Conduit	---	---	---	Brackets	U.S.
ACS-2024-2C	20A	24 (20A)	2	70"	Low	Pigtail leads	---	---	---	Clips	China
ACS-1510-RPC	15A	10 (15A)	1	30"	Standard	6' Det. cord	---	---	Yes	Brackets	U.S.
ACS-2010-RPC-HW	20A	10 (20A)	1	30"	Standard	6' Conduit	---	---	Yes	Brackets	U.S.
ACS-2018-5C-RPC-HW	20A	18 (20A)	5	60"	Standard	6' Conduit	---	---	Yes	Brackets	U.S.
ACS-2018-5C-RPCP-HW	20A	18 (20A)	5	60"	Standard	6' Conduit	---	1-stage	Yes (P)	Brackets	U.S.

This spec

Chassis Profile = Standard profile (2" x 2"), Low profile (1.625" x 1.375")

Termination = Det. cord (detachable cord), Fixed cord (cord is attached—cannot be removed), Conduit (non-metallic flexible whip w/pigtail leads), Pigtail leads (leads at ends of chassis—no whip)

Switch = Yes (On/off rocker switch)

Surge Suppression = 1-stage (basic surge protection), 2-stage (surge protection with backup)

Remote Power Control = Some receptacles are controlled by a remote switch or sequencer (ordered separately); (P) indicates compatibility with Lowell P-Series pass-through sequencers.

Mounting Aids = Brackets (multi-hole brackets with hardware), Clips (clips and screws with wire ties), or Screws (power strips can mount to rear of US or USV Series shelves).

