



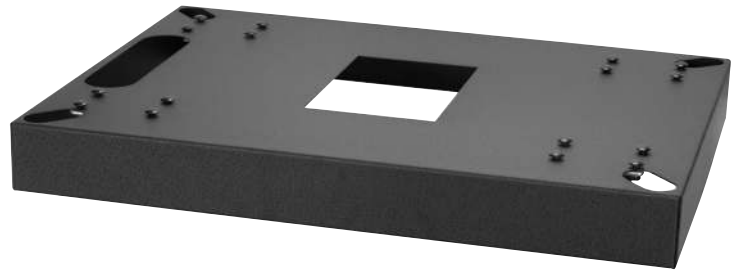
## Model No.

# LXR-MB26

## Mobile Base for Slim Rack

### Construction & Features

- 16-gauge skirted base mounts under rack frame.
- Provides support for heavy equipment mounted in lowest rack position.
- Four non-locking (3") swivel casters inside platform. Total load rating 500 lbs.
- Cable and center openings in base
- Includes hardware for bolt-on installation
- 19"W x 26"D
- Increases overall rack height 3.95"
- Black wrinkle powder epoxy finish
- For use with Lowell slim built-in racks with 26" depth (LXR and LVR when the variable depth rack is set to specific depth)



Standard swivel caster

### A&E Specifications

The mobile base for the rack shall be Lowell Model No. LXR-MB26, which shall mount under the rack frame to add mobility to rack. Construction shall be 16-gauge welded steel with a black wrinkle powder epoxy finish. The heavy-duty, 3" non-locking swivel casters shall be inside the platform increasing rack height 3.95". Casters shall have a total load rating of 500 lbs. The mobile base shall feature bottom openings for cable routing. Overall measurements shall be 19"W x 26"D. Mounting hardware shall be included.

### Model Number Summary

| Model No. | Description               | Depth | Width | Height | Height w/Casters |
|-----------|---------------------------|-------|-------|--------|------------------|
| LXR-MB26  | Mobile base for slim rack | 26"   | 19"   | 2.85"  | 3.95"            |

## Technical Drawings

