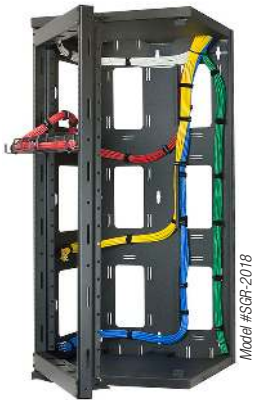


Gate swings open from a fully open side — there's no vertical bar in this corner of the rack frame, which gives you extraordinary access to equipment and cables.



features.

- **Panel Space:** 20U or 35.00" [889]
- **Overall Height:** 41.47" [1053]
- **Overall Depth:** 19.00" [483]
- **Usable Depth:** 17.60" [447]
- **Overall Width:** 20.03" [509]
- **Description:** Open frame wall-mount rack provides extraordinary access with a gate that swings open 90 degrees from a fully open side, making wiring and servicing quick and easy. Ideally suited to telecommunications rooms, voice and data equipment, patch panels, routers, hubs, and switches.
- **Construction:** Made in the USA with 100% certified U.S. steel. Black semi-gloss frame, black textured wrap.
- **Assembly:**
 - Two piece field assembly. Wrap is fully welded. Frame is a separate piece that mounts to the welded wrap.
- **Operation:**
 - Rack can be mounted so gate swings open left or right. Gate swings open 90 degrees, leaving one side fully open for easy access to equipment and cables (i.e. there's no vertical bar in one front corner to impede access).
 - Thumb latches secure frame closed
- **Installation:** Mounting holes on 16" centers.
- **Mounting Rails (fixed position):** 1 pair rails tapped 10-32 on E.I.A. spacing.
- **Cable Management:** Abundant cable paths and tie points.
- **Hardware:** Pilot point rack screws.
- **Compliance:** EIA/TIA compliant. RoHS compliant.
- **Load Capacity:** 150 lbs.

a&e specifications.

The wall-mount rack shall be Lowell #SGR-2018 which shall measure 41.47"H x 20.03"W x 19.00"D. Construction shall be certified U.S. steel with black finish (semi-gloss and textured). The open frame rack shall feature one fully open side and a gate that swings open 90 degrees to access cables and equipment. Thumb latches shall secure the frame closed. The rack shall

provide 20 rack units of panel space and include cable paths, tie points, and one pair of fixed position mounting rails tapped 10-32. Load capacity shall be 150 lbs.

SGR series summary

Model No.	Rack Units	Overall Depth	Usable Depth	Overall Height	Overall Width	Load Capacity	Fixed Rails
SGR-1212	12 U	13.21 [336]	11.60 [295]	27.48 [698]	20.03 [509]	150 lbs [68kg]	1 pr
SGR-2012	20 U	13.21 [336]	11.60 [295]	41.47 [1053]	20.03 [509]	150 lbs [68kg]	1 pr
SGR-1218	12 U	19.00 [483]	17.60 [447]	27.48 [698]	20.03 [509]	150 lbs [68kg]	1 pr
SGR-2018	20 U	19.00 [483]	17.60 [447]	41.47 [1053]	20.03 [509]	150 lbs [68kg]	1 pr

Rack dimensions (rounded) – inches and [mm]; 1U = 1.75"

