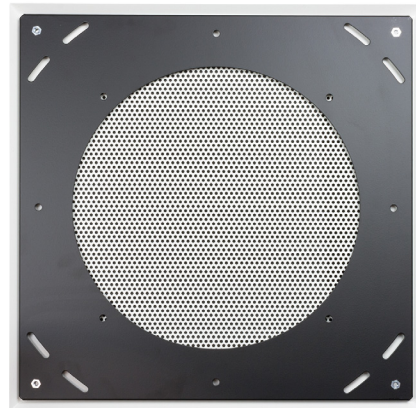


Front



Rear



Made in USA

Square steel grille with beveled edges, perforated center and white finish includes a separate subplate that direct-mounts a 12" speaker and enclosure. The direct-mount method allows a high quality 12" speaker with substantial motor structure weight to be supported by the enclosure instead of the grille.

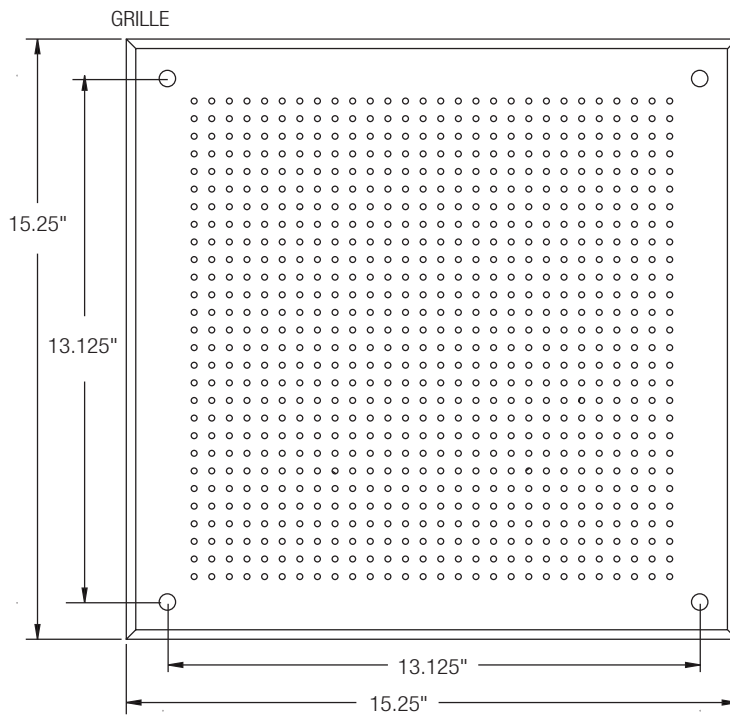
FEATURES:

- **Construction:** One-piece perforated 18-gauge steel grille with beveled edges and white powder epoxy finish includes a separate 18-gauge steel subplate with black powder epoxy finish.
- **Overall Dimensions:** 15.25" square (perforated area 12.125" square).
- **Mounting Projection:** 0.375"
- **Mounting Bolt Circle (subplate):** 16.6" dia.
- **Speaker Bolt Circle (subplate):** 11.6" dia.
- **Center Hole (subplate):** 10.5" dia.
- **Country of Origin:** Made in USA with certified US steel
- **Hardware (included):**
 - (4) 8-32 x 3/4" black oxide screws with nuts to mount a speaker to the subplate.
 - (4) 8-32 x 2" black oxide screws to mount the speaker/subplate assembly to an enclosure, which allows a high quality speaker with substantial motor structure weight to be supported by the enclosure instead of the grille.
 - (4) 8-32 x 3/4" white screws to mount the non-loadbearing grille to the subplate.
- **A&E Specifications:** The grille for use with a 12" speaker shall be Lowell model FW-12, which shall be one-piece 18-gauge steel with white powder epoxy finish, perforated center and beveled edges. It shall include an 18-gauge steel subplate with black powder epoxy finish and mounting bolt circle of 16.6" dia. The non-loadbearing grille shall be designed to mount to the subplate with four white screws, while the subplate shall direct-mount to the speaker and enclosure. Overall grille dimensions shall be 15.25" square with a mounting projection of 0.375".

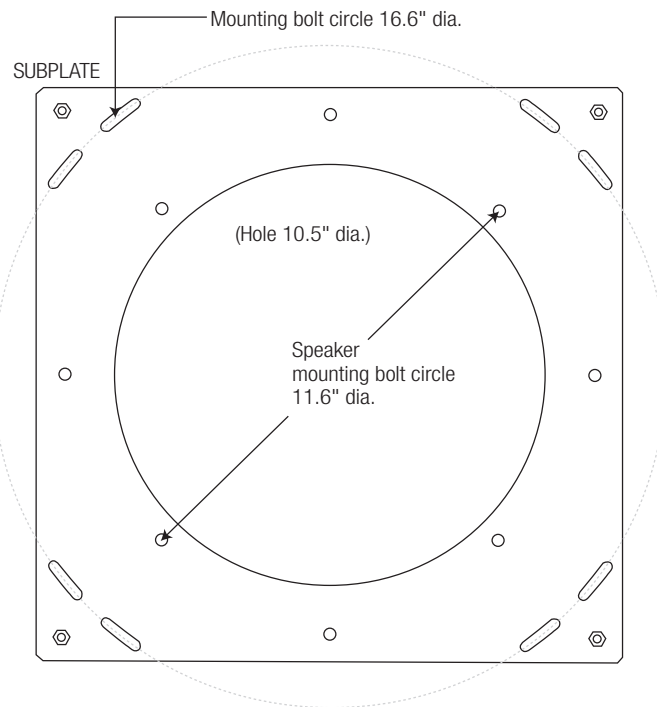
COMPATIBLE COMPONENTS (order separately):

Note: Grilles are designed to work with speakers, enclosures, and mounting accessories listed on this specification sheet. Using the grille to install speakers without a metal enclosure may not meet the requirements of all local and national electrical and building codes. The installer should request approval of the installation method from the Authority Having Jurisdiction (AHJ) before installing the speaker system.

Application	Speaker	Enclosure	Mounting Aids
SURFACE-mount with enclosure	12" EIA	IBOX-2, IBOX-3	Requires custom rigging hardware
RECESSED in Tile Ceiling with enclosure	12" EIA	IBOX-2, IBOX-3	Requires custom rigging hardware
RECESSED Before Drywall Installed with enclosure	12" EIA	IBOX-2, IBOX-3	Requires custom rigging hardware
FLOWN with enclosure	12" EIA	IBOX-2, IBOX-3	Requires custom rigging hardware



Note: Grille perforation pattern is shown for illustration only and may not reflect actual perforation pattern or dimensions.



WARNING! Speaker installation should only be performed by experienced qualified professionals with knowledge of load-rated hardware and safe installation, mounting, and rigging techniques. Improperly installed equipment can result in property damage, personal injury, death, and/or liability to the installing contractor. The speaker system must be mounted in accordance with all local, state, and federal codes and regulations and the installation must conform to industry standard practices. It is the responsibility of the installer to furnish all installation hardware, rigging hardware, and safety or restraint cables to be used. Before installation, it is the responsibility of the installer to consult a licensed mechanical or structural engineer to evaluate and certify the structural integrity and safety of any mounting method and the suitability of that method to be used to mount the loudspeaker to the building structure in this particular installation. Lowell Manufacturing is not responsible for the use, misuse, misapplication, or unsafe installation of this loudspeaker product.

