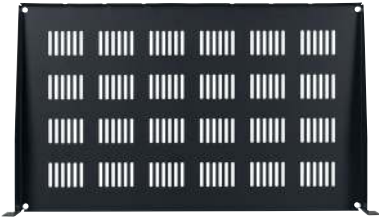
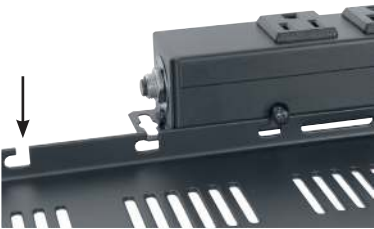




Front view



Top view



Notches on the shelf's rear flange make it easy to mount a 12" power strip (see options).

### features.

- **Panel Space:** 1U
- **Overall Depth:** 10.75" [273]
- **Overall Width:** 19.00" [483]
- **Usable Width:** 17.56" [446]
- **Description:** Rugged steel shelf mounts to 19" E.I.A. compliant rack, providing support for non-rackmount equipment such as consumer electronics, power supplies, and chassis style components.
- **Construction:** 16-gauge certified U.S. steel
- **Finish:** Smooth black powder epoxy finish
- **Base:** Fully vented base for passive ventilation
- **Front:** Front flange (0.38") adds strength and helps keep equipment in place.
- **Rear:** Slotted rear flange (0.56") provides tie-off points for cable management and notches to mount an optional 12" power strip.
- **Load Capacity:** 50 lbs.
- **Compliance:** E.I.A./T.I.A.
- **Origin:** Made in the U.S.A.
- **Options:** (order separately)
  - **ACS-1506-WW:** Compact 12" AC power strip with six 15A NEMA outlets, spaced for power supplies, and 6 ft. attached cord.
  - **ACS-1507:** Compact 12" AC power strip with seven 15A NEMA outlets and 6 ft. detachable cord.

### a&e specifications.

The rackmount utility shelf shall be Lowell model #USV-110 with overall dimensions of 19"W x 10.75"D x 1U. It shall be 16-gauge certified U.S. steel construction with fully vented base and smooth black powder epoxy finish. It shall feature a front and rear flange. The rear flange shall have slots to provide tie-off points for cable management, and notches to mount an optional 12" power strip. The shelf shall be made in the U.S.A. and have a load capacity of 50 lbs.

#### USV series summary

Model No.	Panel Space	Overall Width	Useable Width	Overall Depth	Overall Height	Load Capacity	Material	Carton Pack
▶ USV-110	1 U	19.00 [483]	17.56 [446]	10.75 [273]	1.72 [44]	50 lbs. [23 kg]	16-ga. steel	1
USV-214	2 U	19.00 [483]	17.56 [446]	14.00 [356]	3.47 [88]	50 lbs. [23 kg]	16-ga. steel	1
USV-314	3 U	19.00 [483]	17.56 [446]	14.00 [356]	5.22 [133]	50 lbs. [23 kg]	16-ga. steel	1
USV-414	4 U	19.00 [483]	17.56 [446]	14.00 [356]	6.97 [177]	50 lbs. [23 kg]	16-ga. steel	1

Dimensions = inches [mm]; 1U = 1.75"

