

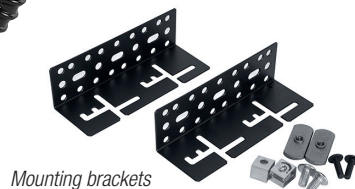


Non-metallic flexible conduit rotates in any direction.

Hardwired power strip with 14 NEMA 20A receptacles (7 duplex) includes universal mounting brackets for desk, wall or rack-mount.

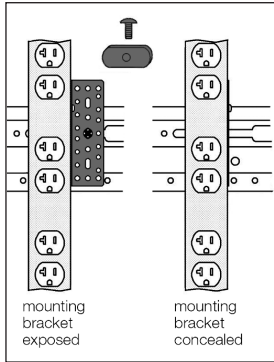
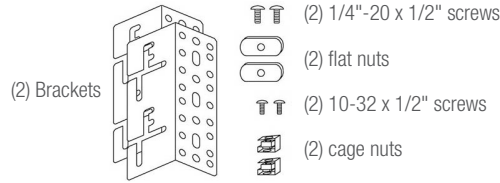
FEATURES:

- **Power Rating:** 120VAC, 60Hz, 20A
- **Chassis:** 30" x 2" x 2" steel chassis with black powder epoxy finish
- **Termination:** Hardwired non-metallic flexible conduit with pigtail leads rotates in any direction. The 6-ft. conduit can be trimmed in the field if needed.
- **Receptacles:** Total of 14 NEMA 5-20R receptacles (7 duplex)
- **Universal Mounting Brackets:** The universal brackets allow for power strip installation in a variety of applications with receptacles facing front, center or rear. Brackets are engineered with multiple mounting points and include two types of hardware to facilitate easy installation in a rack with adjustable or fixed rails, to a wall, or under a desk/counter. The brackets can be mounted so they are exposed for easy access or concealed beneath the power strip for an aesthetically cleaner installation.
- **Certification:** ETL Listed in U.S./Canada
- **Origin:** Made in U.S.A. with global components
- **A&E Specifications:** The hardwired power strip shall be Lowell model ACS-2014-HW, which shall have a power rating of 120VAC 60Hz 20A and include 14 NEMA 5-20R receptacles (7 duplex). The chassis shall measure 30" x 2" x 2". Termination shall be to a 6-ft. non-metallic flexible conduit with pigtail leads. The power strip shall be ETL listed and made in the U.S.A. with global components. It shall include universal mounting brackets and hardware.



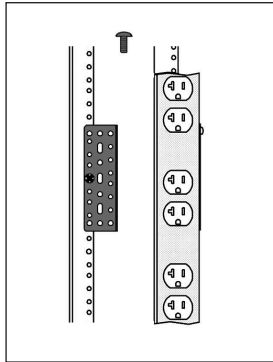
Mounting brackets

UNIVERSAL MOUNTING BRACKETS: The brackets can be mounted exposed for easy access or concealed for a cleaner install. Includes variety of hardware for versatile installation.



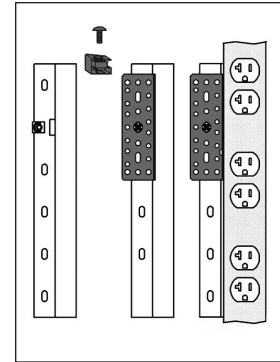
RACK w/ADJUSTABLE RAILS (side mount):

Mount to horizontal side supports with universal brackets, 1/4"-20 screws, flat nuts.



RACK w/ADJUSTABLE RAILS (rear mount):

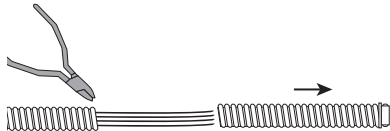
Mount to rear rail with universal brackets, 10-32 screws.



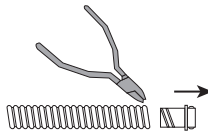
RACK w/ FIXED POSITION RAILS (and rear Z-angle bracket):

Mount to Z-angle with universal brackets, 10-32 screws, cage nuts.

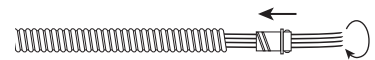
HOW TO TRIM THE CONDUIT: The 6 ft. non-metallic flexible conduit can be trimmed in the field.



- 1) REMOVE EXCESS LENGTH:**
Snip reinforcing rib at desired length. Bend the conduit to expose the cut and carefully cut around the conduit without cutting the wires inside. Remove excess length.



- 2) REMOVE CONNECTOR:**
Carefully snip the last rib(s) to loosen the connector from the excess length, then twist/pull to remove it.



- 3) REATTACH CONNECTOR:**
Twist/push the connector to attach it to the shortened conduit.



ACS Series Power Strips (overview)

Model No.	Power Rating	NEMA Receptacles	Circuits	Chassis Length	Chassis Profile	Termination	On/Off Switch	Surge Suppression	Remote Power Control	Mounting Aids	Country of Origin
ACS-1505-SW	15A	5 (15A)	1	12"	Standard	6' Det. cord	Yes	---	---	Brackets	U.S.
ACS-1505-SW-SD	15A	5 (15A)	1	12"	Standard	6' Det. cord	Yes	2-stage	---	Brackets	U.S.
ACS-1506	15A	6 (15A)	1	20"	Low	6' Fixed cord	---	1-stage	---	Clips	China
ACS-1506-WW	15A	6 (15A)	1	12"	Low	6' Fixed cord	---	---	---	Screws	U.S.
ACS-1507	15A	7 (15A)	1	12"	Low	6' Det. cord	---	---	---	Screws	U.S.
ACS-1512	15A	12 (15A)	1	32"	Low	12' Fixed cord	---	1-stage	---	Clips	China
ACS-1524	15A	24 (15A)	1	60"	Low	12' Fixed cord	---	1-stage	---	Clips	China
ACS-1524-2C	15A	24 (15A)	2	70"	Low	Pigtail leads	---	---	---	Clips	China
ACS-2012	20A	8 (15A) + 4 (20A)	1	32"	Low	12' Fixed cord	---	1-stage	---	Clips	China
ACS-2024	20A	16 (15A) + 8 (20A)	1	70"	Low	12' Fixed cord	---	1-stage	---	Clips	China
ACS-2014-HW	20A	14 (20A)	1	30"	Standard	6' Conduit	---	---	---	Brackets	U.S.
ACS-2014-2C-HW	20A	8 (15A) + 6 (20A)	2	30"	Standard	6' Conduit	---	---	---	Brackets	U.S.
ACS-2020-6C-HW	20A	20 (20A)	6	60"	Standard	6' Conduit	---	---	---	Brackets	U.S.
ACS-2020-IG-6C-HW	20A	20 (I.G. 20A)	6	60"	Standard	6' Conduit	---	---	---	Brackets	U.S.
ACS-2020-IG-10C-HW	20A	20 (I.G. 20A)	10	60"	Standard	6' Conduit	---	---	---	Brackets	U.S.
ACS-2024-2C	20A	24 (20A)	2	70"	Low	Pigtail leads	---	---	---	Clips	China
ACS-1510-RPC	15A	10 (15A)	1	30"	Standard	6' Det. cord	---	---	Yes	Brackets	U.S.
ACS-2010-RPC-HW	20A	10 (20A)	1	30"	Standard	6' Conduit	---	---	Yes	Brackets	U.S.
ACS-2018-5C-RPC-HW	20A	18 (20A)	5	60"	Standard	6' Conduit	---	---	Yes	Brackets	U.S.
ACS-2018-5C-RPCP-HW	20A	18 (20A)	5	60"	Standard	6' Conduit	---	1-stage	Yes (P)	Brackets	U.S.

This spec

Chassis Profile = Standard profile (2" x 2"), Low profile (1.625" x 1.375")

Termination = Det. cord (detachable cord), Fixed cord (cord is attached—cannot be removed), Conduit (non-metallic flexible whip w/pigtail leads), Pigtail leads (leads at ends of chassis—no whip)

Switch = Yes (On/off rocker switch)

Surge Suppression = 1-stage (basic surge protection), 2-stage (surge protection with backup)

Remote Power Control = Some receptacles are controlled by a remote switch or sequencer (ordered separately); (P) indicates compatibility with Lowell P-Series pass-through sequencers.

Mounting Aids = Brackets (multi-hole brackets with hardware), Clips (clips and screws with wire ties), or Screws (power strips can mount to rear of US or USV Series shelves).

