



Includes removable front security panel.



Rackmount utility shelf with punched base is made for quick installation of various Lowell electrical and electronic accessory devices.

FEATURES

- **Panel Space:** 2U
- **Overall Depth:** 10.00" [254]
- **Overall Width:** 19.00" [483]
- **Construction:**
 - 16-gauge certified U.S. steel
 - Smooth black powder epoxy finish
 - Base is punched to mount various Lowell screw-mount chassis-style devices with nominal measurement of 3"x 5", 3"x 7" or 5"x 6"
- **Security Panel:** Removable front security panel.
- **Flange:** Rear retaining flange (0.44")
- **Load Capacity:** 50 lbs.
- **Cable Management:**
 - Multiple side openings (1½" diameter)
 - Rear cable lacing points
- **Origin:** Made in the U.S.A.
- **Hardware:** Includes mounting hardware
- **Compatible Components:** (order separately)
 - **MSM2:** Momentary switch module
 - **SMG-1:** Sound masking generator
 - **RY Series:** Relay modules
 - **TLM-600:** Impedance matching transformer

A&E SPECIFICATIONS

The rackmount utility shelf shall be Lowell Model USE-210, which shall be 16-gauge certified U.S. steel with black powder epoxy finish. The 2U x 10"D x 19"W shelf shall be punched on the base to accept various Lowell electrical and electronic accessory devices. The shelf shall feature side openings for cable entry, rear lacing points, and a rear retaining flange. The unit shall include a removable front security panel. Load capacity shall be 50 lbs. The shelf shall be made in the U.S.A.

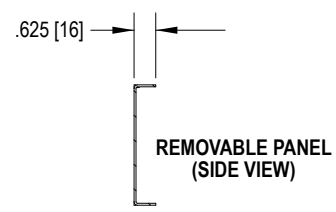
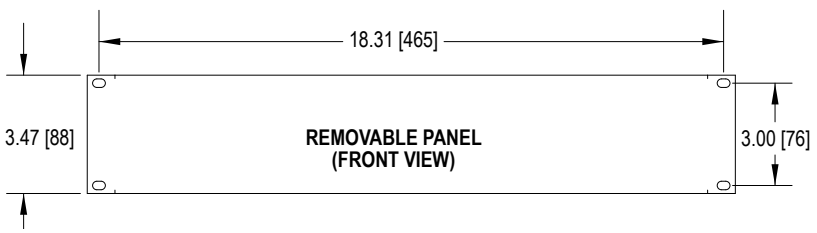
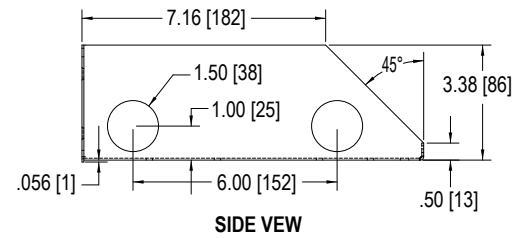
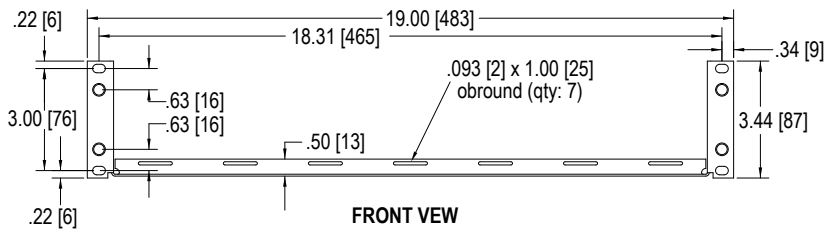
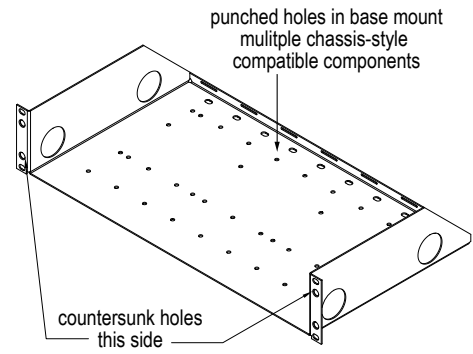
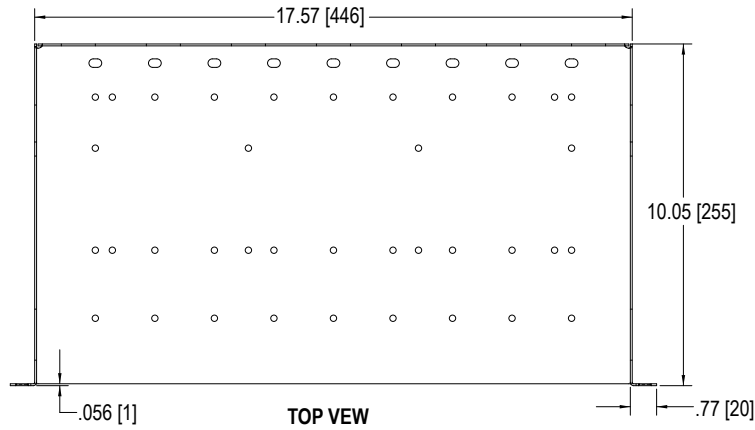
SERIES OVERVIEW

Model No.	RU	Overall Width	Overall Depth	Overall Height	Load Capacity	Material	Carton Pack
USE-210	2U	19.00 [483]	10.00 [254]	3.50 [89]	50 lbs [23 kg]	16-gauge steel	1
USE-310	3U	19.00 [483]	10.00 [254]	5.25 [133]	50 lbs. [23 kg]	16-gauge steel	1

Dimensions = inches [mm]; 1U = 1.75"



TECHNICAL DRAWINGS *Dimensions are inches and [mm] unless stated otherwise.*



INTERNAL USE ONLY: PN 24147