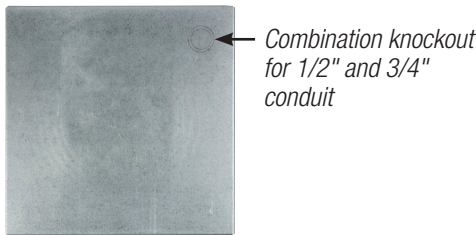




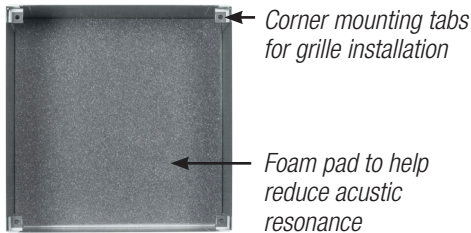
Galvanized steel enclosure for recessed installation of an 8" speaker in a ceiling or wall. Two sides are pre-punched to mount optional retrofit brackets or tile support channel rails (order separately) in various ceiling or wall thicknesses (see installation info below).

FEATURES:

- **Construction:** 18-gauge galvanized steel enclosure with mounting holes on two opposite sides used for mounting optional retrofit brackets or tile support channel rails.
- **Length x Width:** 10" x 10"
- **Depth:** 4"
- **Volume:** .231 cu.ft.
- **Knockouts:** Combination knockouts for conduit (1/2" and 3/4") on two opposite sides and rear.
- **Acoustic Treatment:** Foam pad to help reduce acoustic/mechanical resonance.
- **Installation:**
 - Corners feature recessed mounting tabs with four (4) Tinnerman clips for grille installation. The recessed clip position assures protected accessibility in plaster or poured concrete applications.
 - Two sides feature pre-punched holes for mounting optional retrofit brackets (SS9) to accommodate ceiling or wall thicknesses of 0", 0.25", 0.5", 0.75", 1", 1.25", 1.5", 1.75", 2", or 2.95" using four (4) #4 x 1/2" sheet metal screws (included with brackets).
 - Alternatively, the two sides with pre-punched holes can mount optional tile support channels rails (SS24, SS30, SS48) to accommodate ceiling tile thicknesses of 0.5", 0.75", 1", 1.25", 1.5", 1.75", or 2" using four (4) #4 x 1/2" sheet metal screws (included with channel rails).
- **Country of Origin:** Made in U.S.A.
- **A&E Specifications:** The enclosure for recessed installation of 8" speakers shall be Lowell model P68XA, which shall be 18-gauge galvanized steel (10" x 10" x 4"). It shall feature combination knockouts for conduit (1/2" and 3/4") on two opposite sides and rear of enclosure. It shall also feature recessed mounting tabs with four Tinnerman clips, and a foam pad to help reduce acoustic/mechanical resonance. The enclosure shall be made in the U.S.A.



Combination knockout for 1/2" and 3/4" conduit



Corner mounting tabs for grille installation

Foam pad to help reduce acoustic resonance



Two sides (opposite) feature combination knockouts for 1/2" and 3/4" conduit



Two sides (opposite) include mounting holes used for optional retrofit brackets (order separately)



Optional retrofit brackets (SS9 shown) or channel rails mount using pre-punched mounting holes on the side of enclosure to accommodate various ceiling or wall thicknesses.

Retrofit Option: SS9 retrofit bracket (order separately) can be mounted to the enclosure using holes pre-punched to accommodate different ceiling or wall thicknesses.

Tile Ceiling Option: tile support channel rails _____ (SS24, SS30, or SS48) (order separately) can be mounted to the enclosure using holes pre-punched to accommodate different ceiling or wall thicknesses.

COMPATIBLE COMPONENTS (order separately):

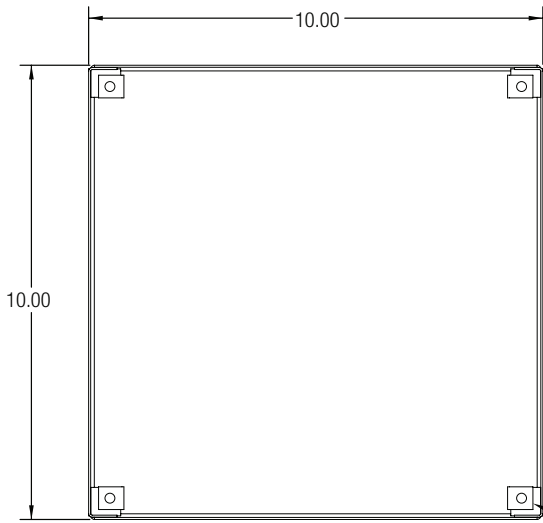
- **Speakers:** 8" EIA. *Not for use with robust 8" coaxial speakers, such as Lowell model 8A50 or 8P100, which require a larger volume enclosure with depth greater than 4"*
- **Grilles (screw-mount):** FW-8, JG-8X, SG-8, SG-8VP, IC-105A, VRG-8
- **Tile Support Channel Rails:** SS24, SS30, SS48
- **Retrofit Bracket:** SS9

INSTALLATION: Recessed

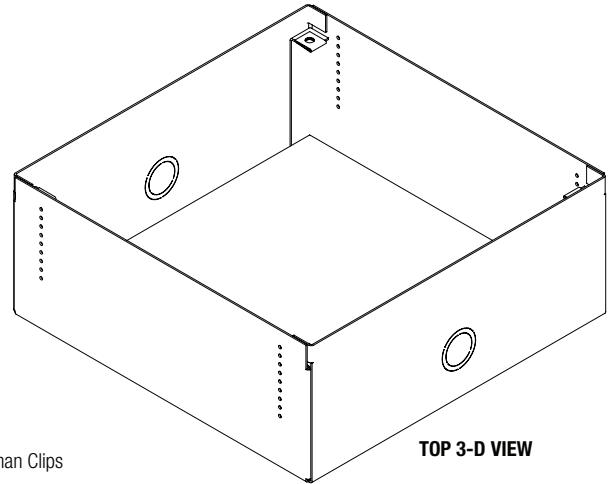
FOR SPEAKER SIZE: 8"

FOR GRILLE TYPE: Screw-mount



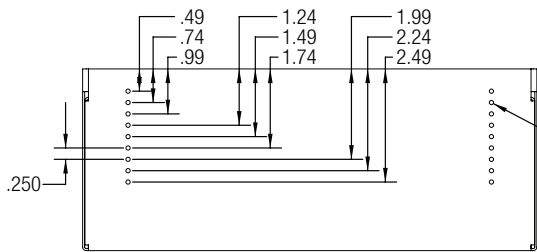


TOP VIEW



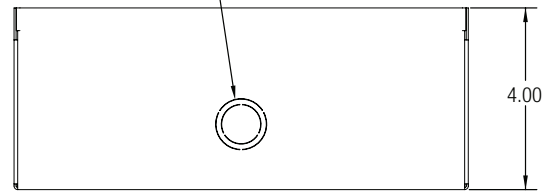
TOP 3-D VIEW

8-32 Tinnerman Clips



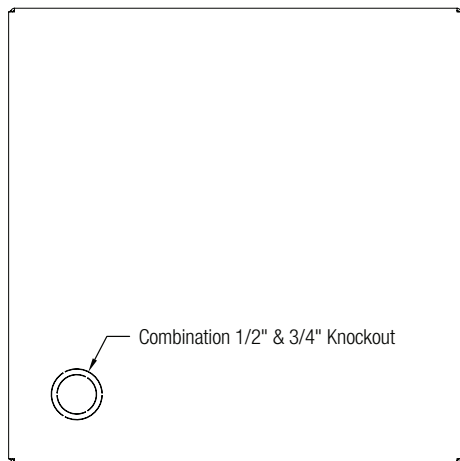
FRONT VIEW

Combination 1/2" & 3/4" Knockout



RIGHT SIDE VIEW

.094 mounting holes for optional retrofit brackets or tile support channel rails



BOTTOM VIEW

Combination 1/2" & 3/4" Knockout

Measurements are inches unless noted otherwise.

